

x
x **BRONX BIOLAB**

x x x

BREATHING ROOM
ZHONG ZHAO

3.5+ ACRES, 134TH STREET GANTRY SITE, PORT MORRIS

COMMUNITY'S ASPIRATION FOR CLEAN AIR & WATERFRONT LANDSCAPE SCHEME



ASTHMA ALLEY LANDSCAPE SCHEME

*Major Sources of Air Pollution
in the Bronx and Likely Areas of Impact*



Combined Buffers

Approximately 66 percent of the Bronx's land mass falls within the combined buffers (excluding parkland and water bodies).



Toxic Release Inventory (TRI) Buffers



Stationary Point Source Buffers (SPS)



Limited Access Highway Buffers



Major Truck Route Buffers

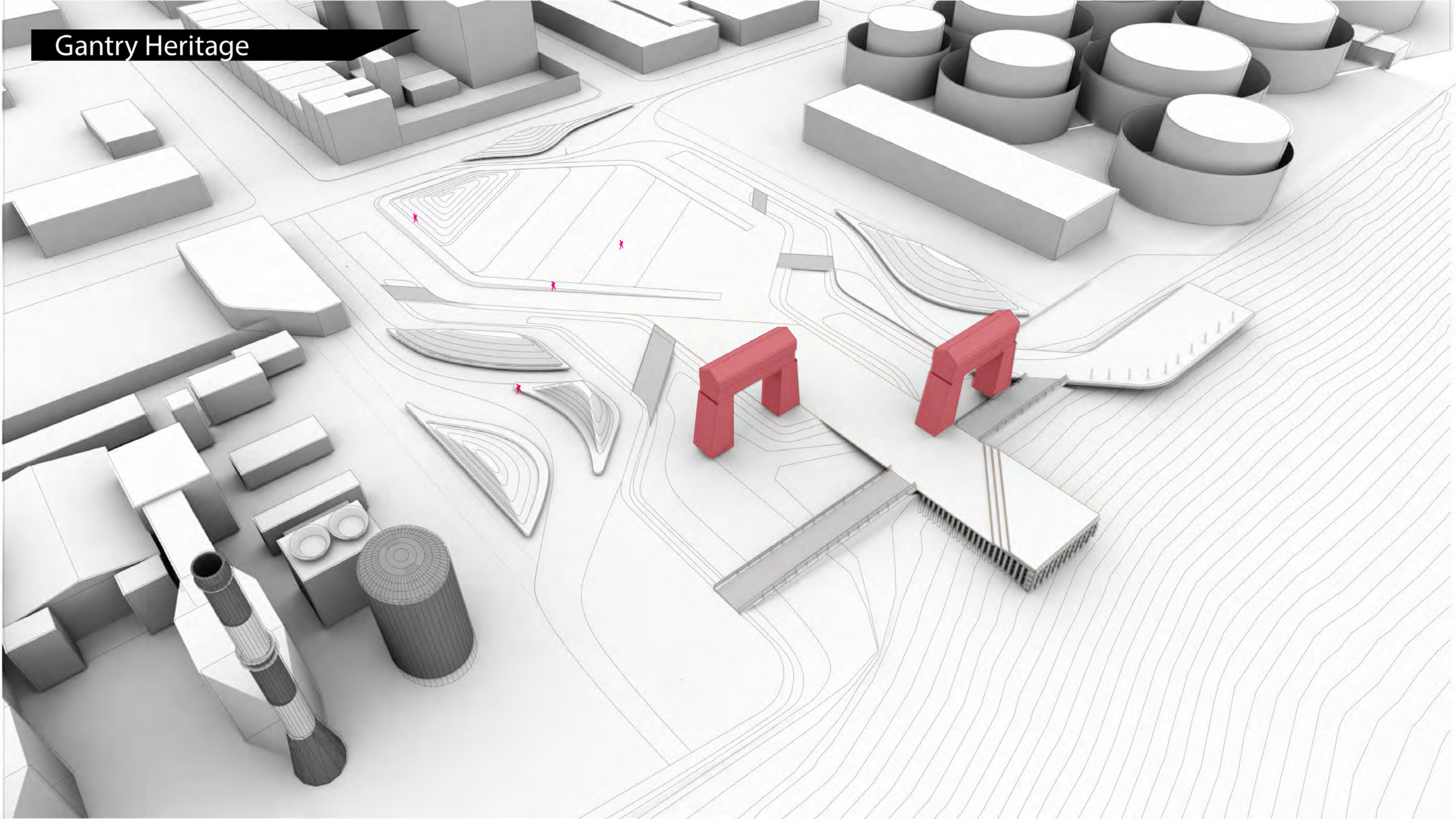
SITE BOUNDRY



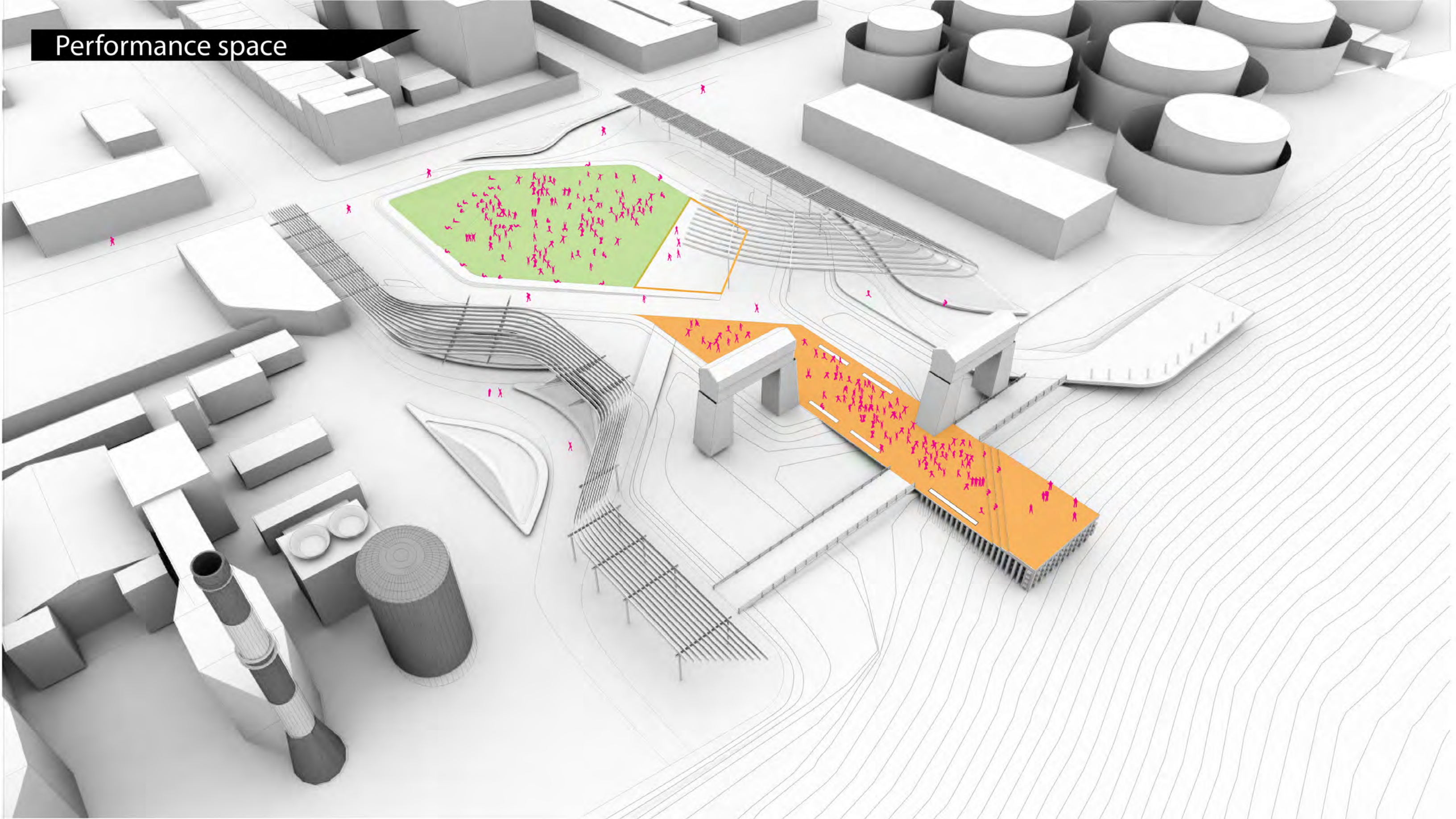
BREATHING ROOM



Gantry Heritage



Performance space



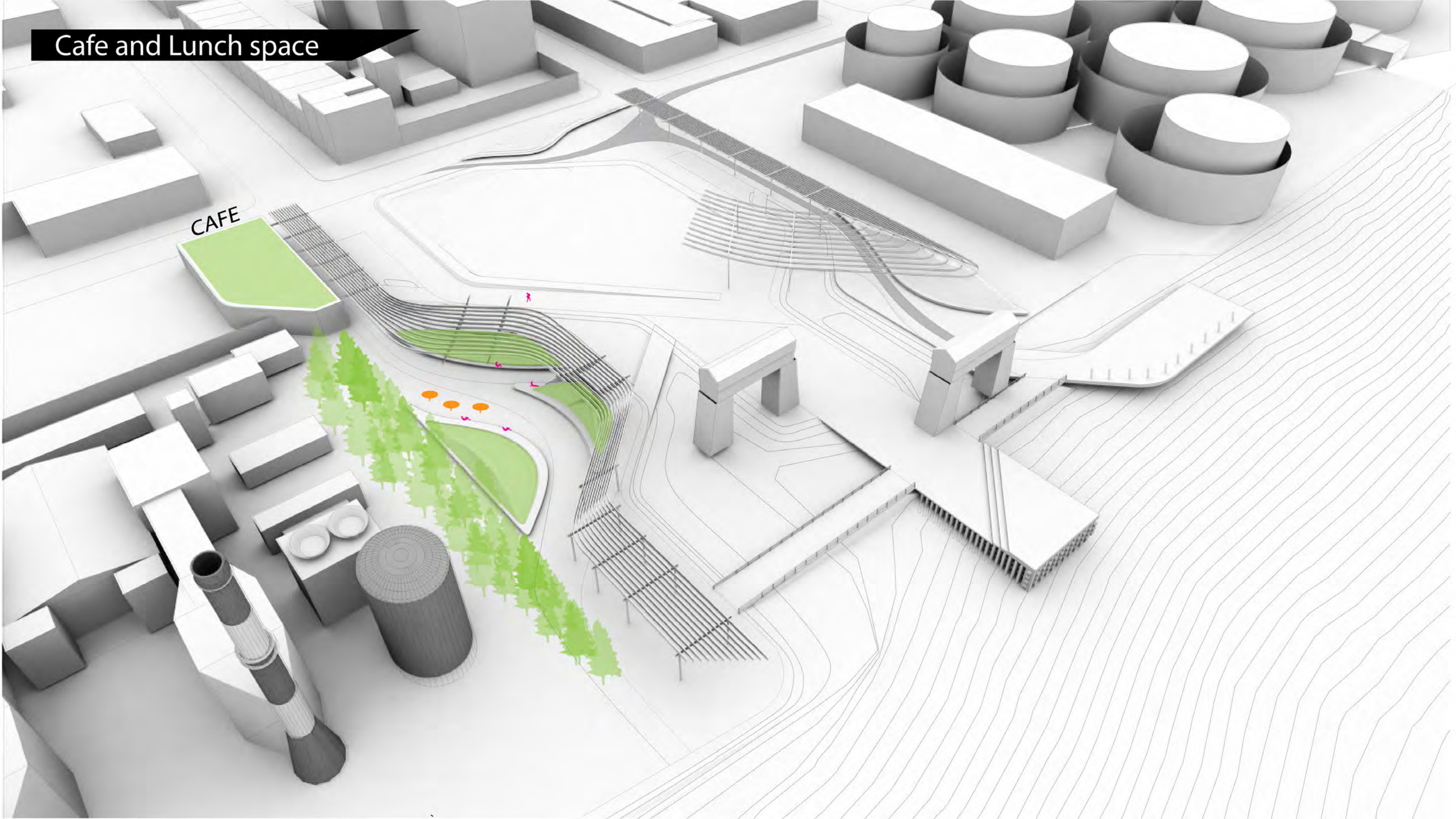
EVENTS VIEW *OSCAPE SCHEME*



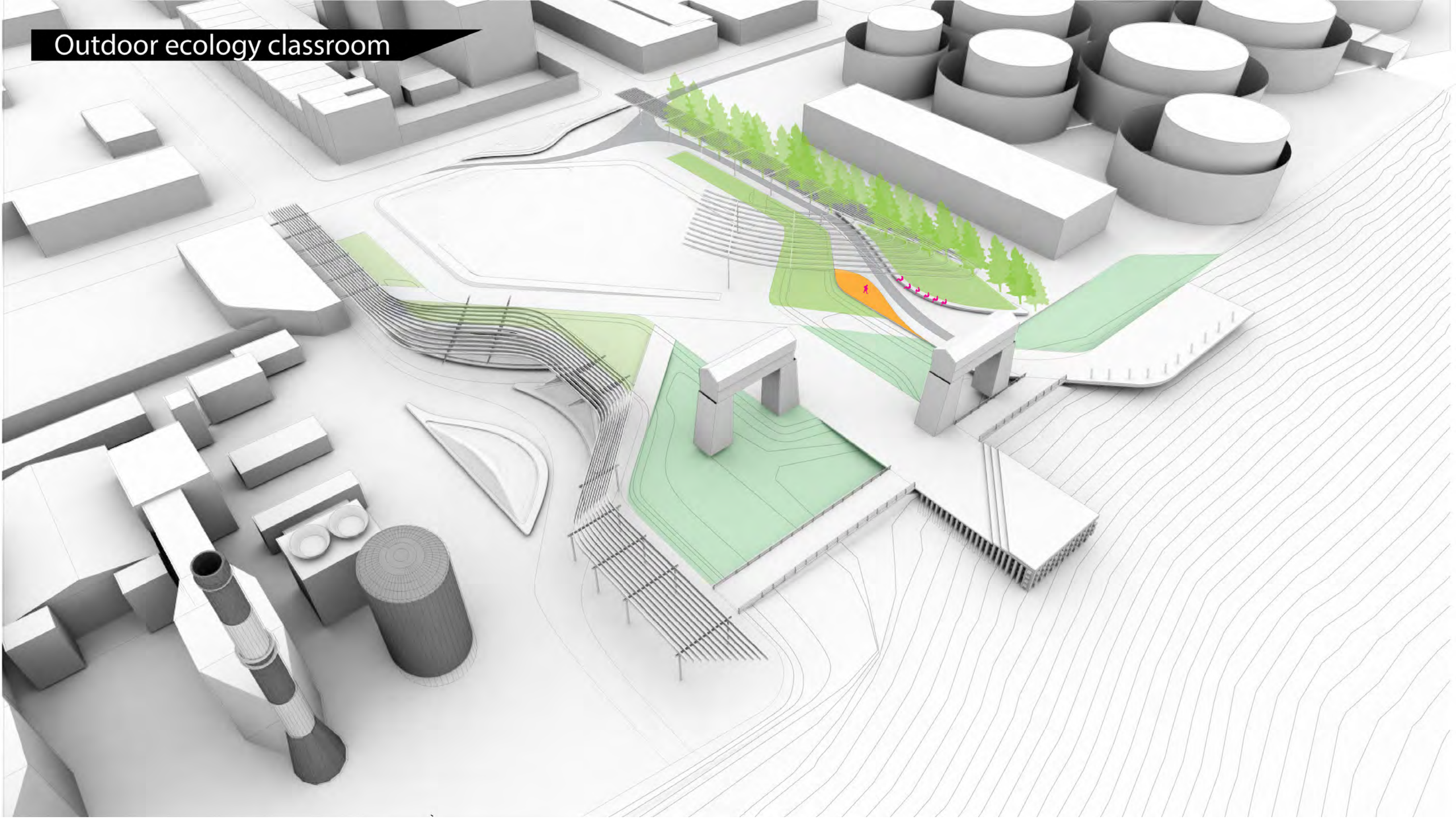
Dock



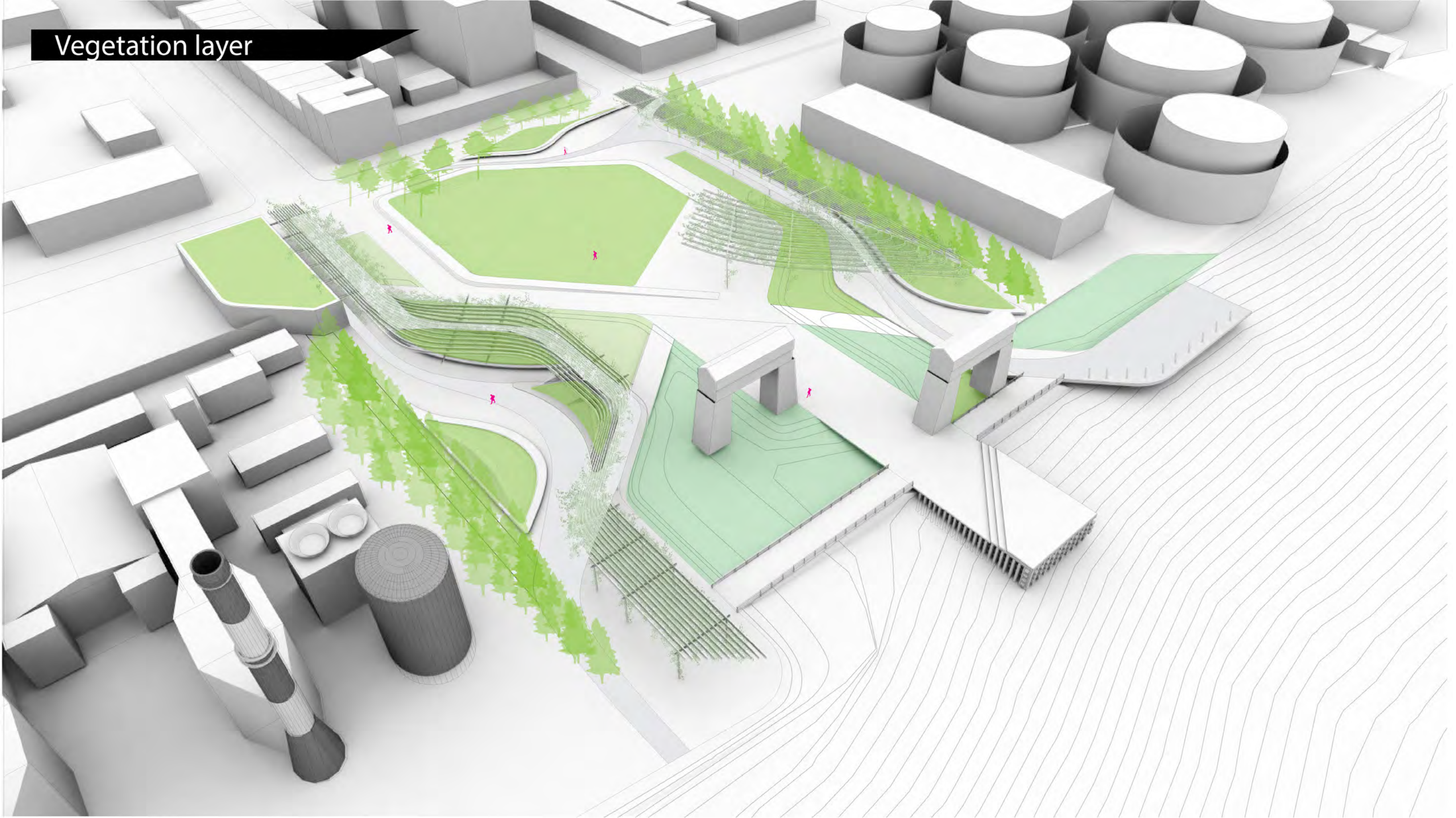
Cafe and Lunch space



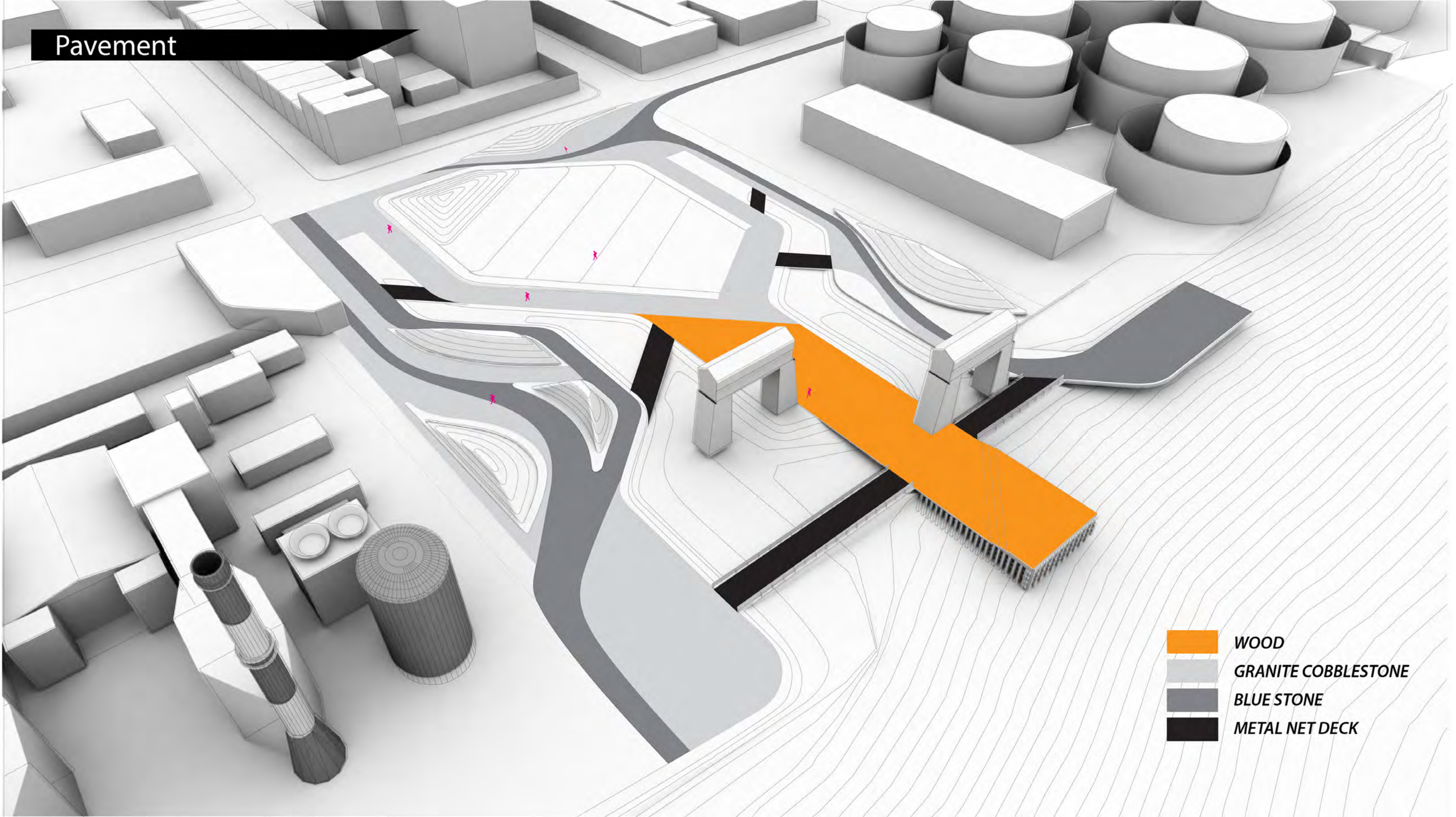
Outdoor ecology classroom



Vegetation layer

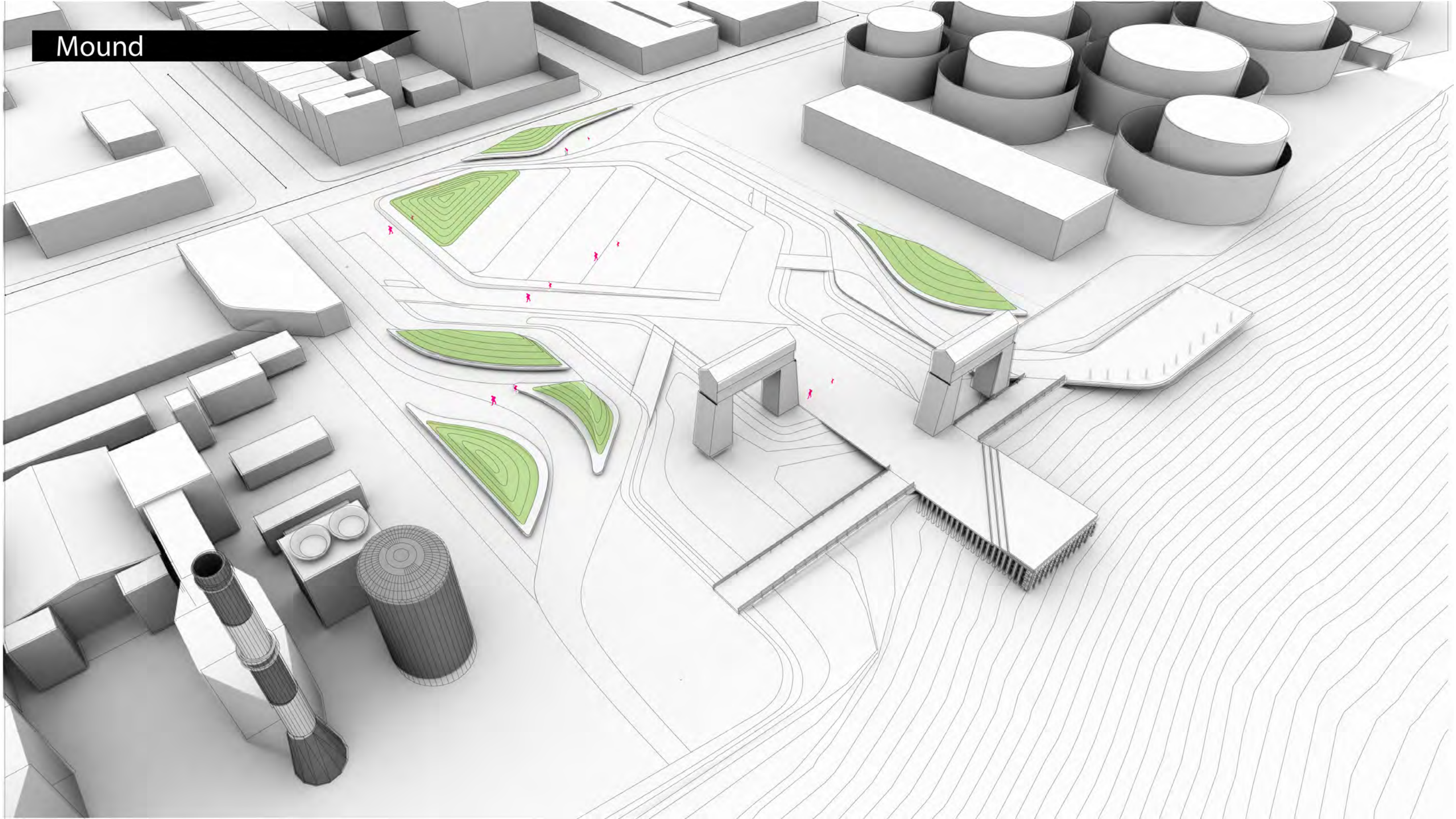


Pavement

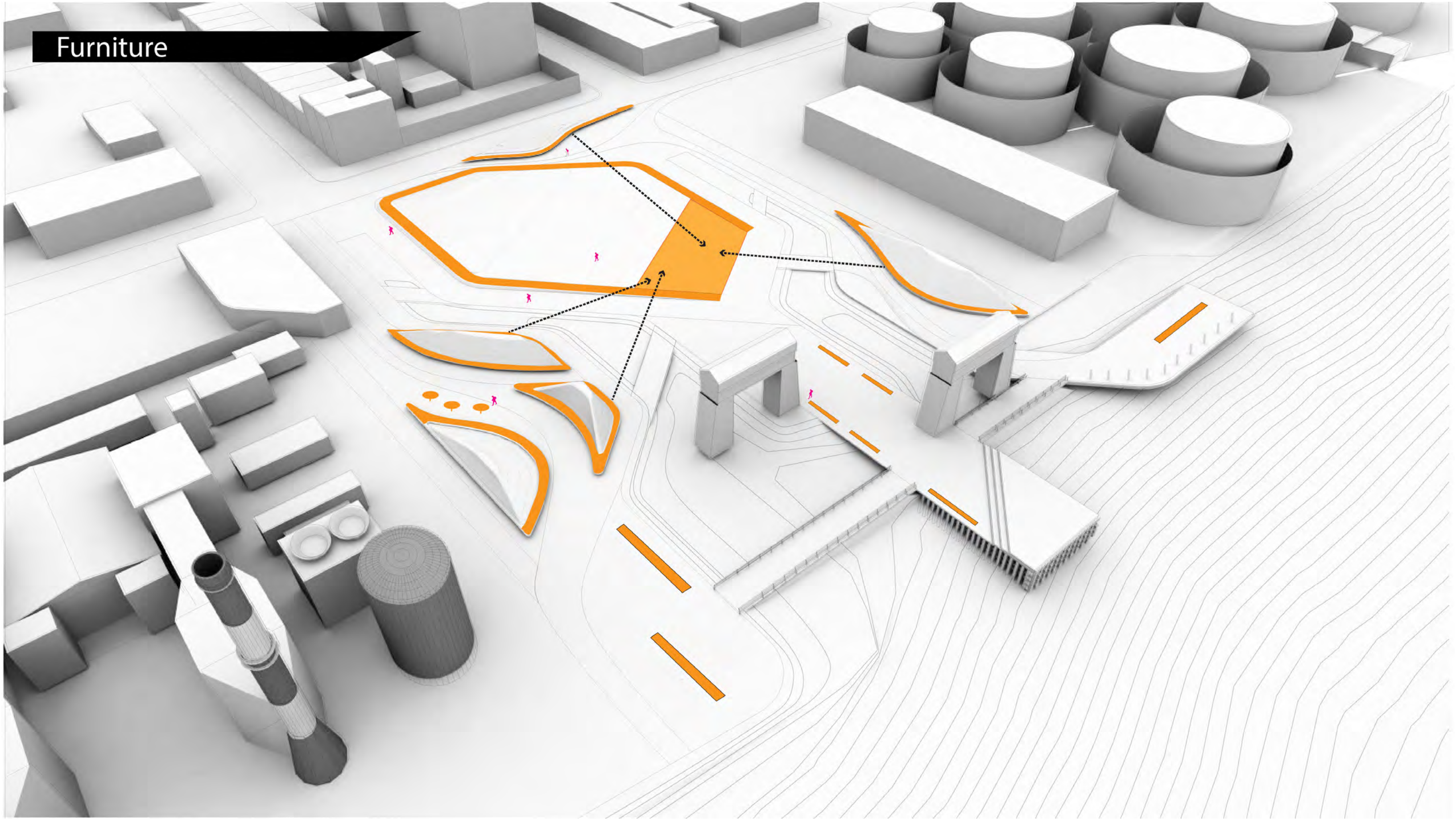


-  WOOD
-  GRANITE COBBLESTONE
-  BLUE STONE
-  METAL NET DECK

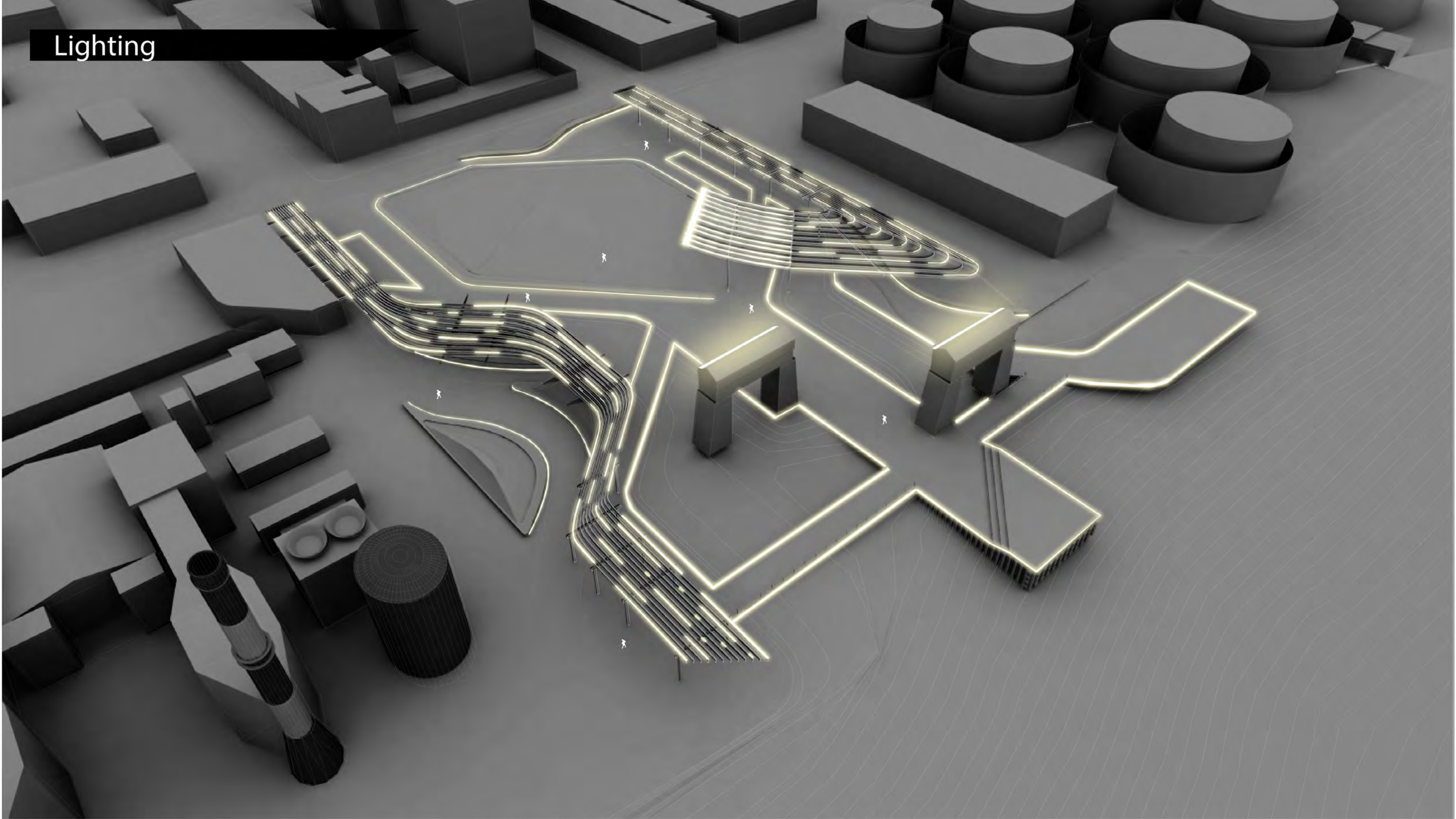
Mound



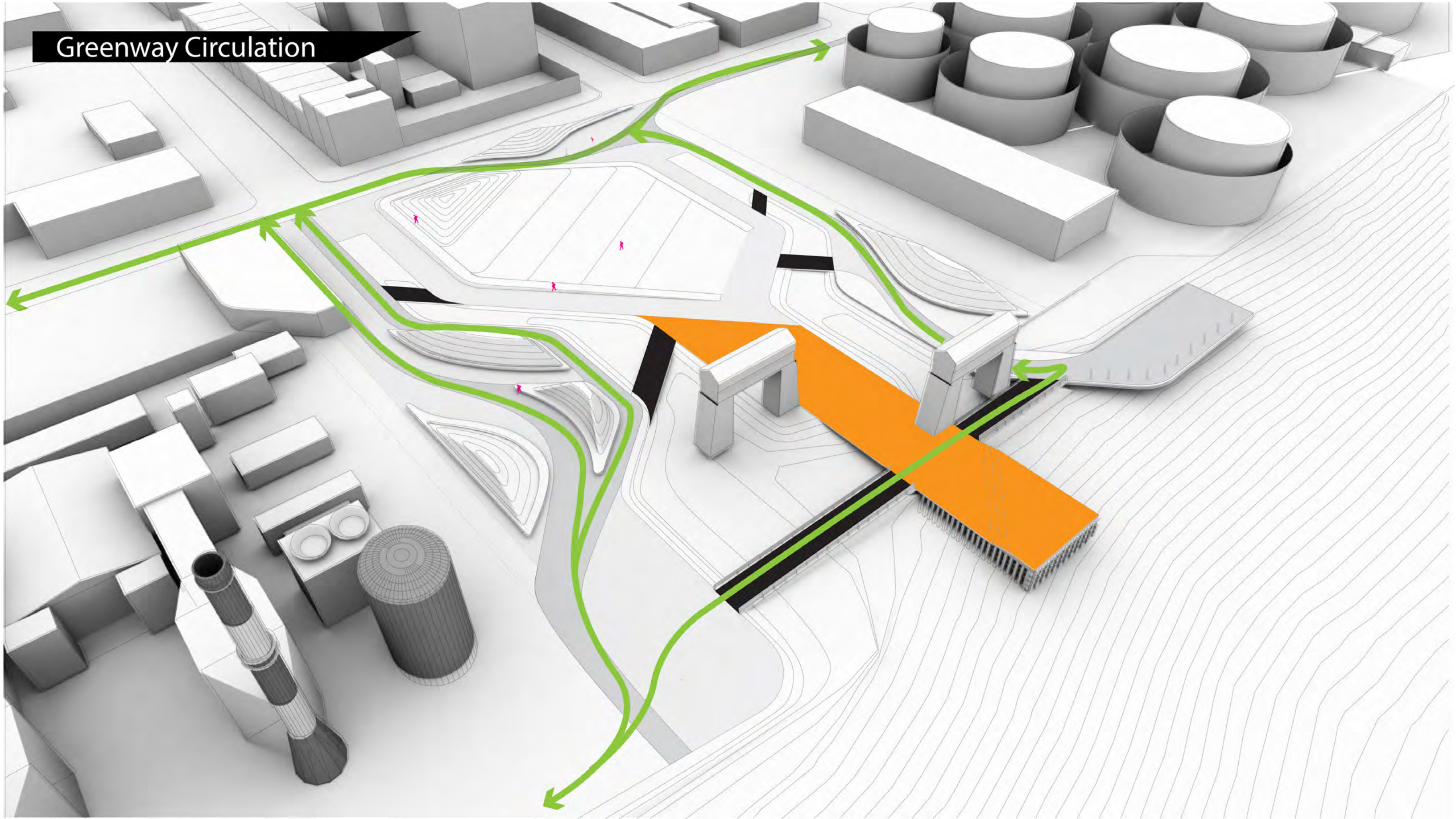
Furniture



Lighting



Greenway Circulation





Hydrangea vine



Fox grape



Honeysucker



White pine



Pin oak



Red Cedar



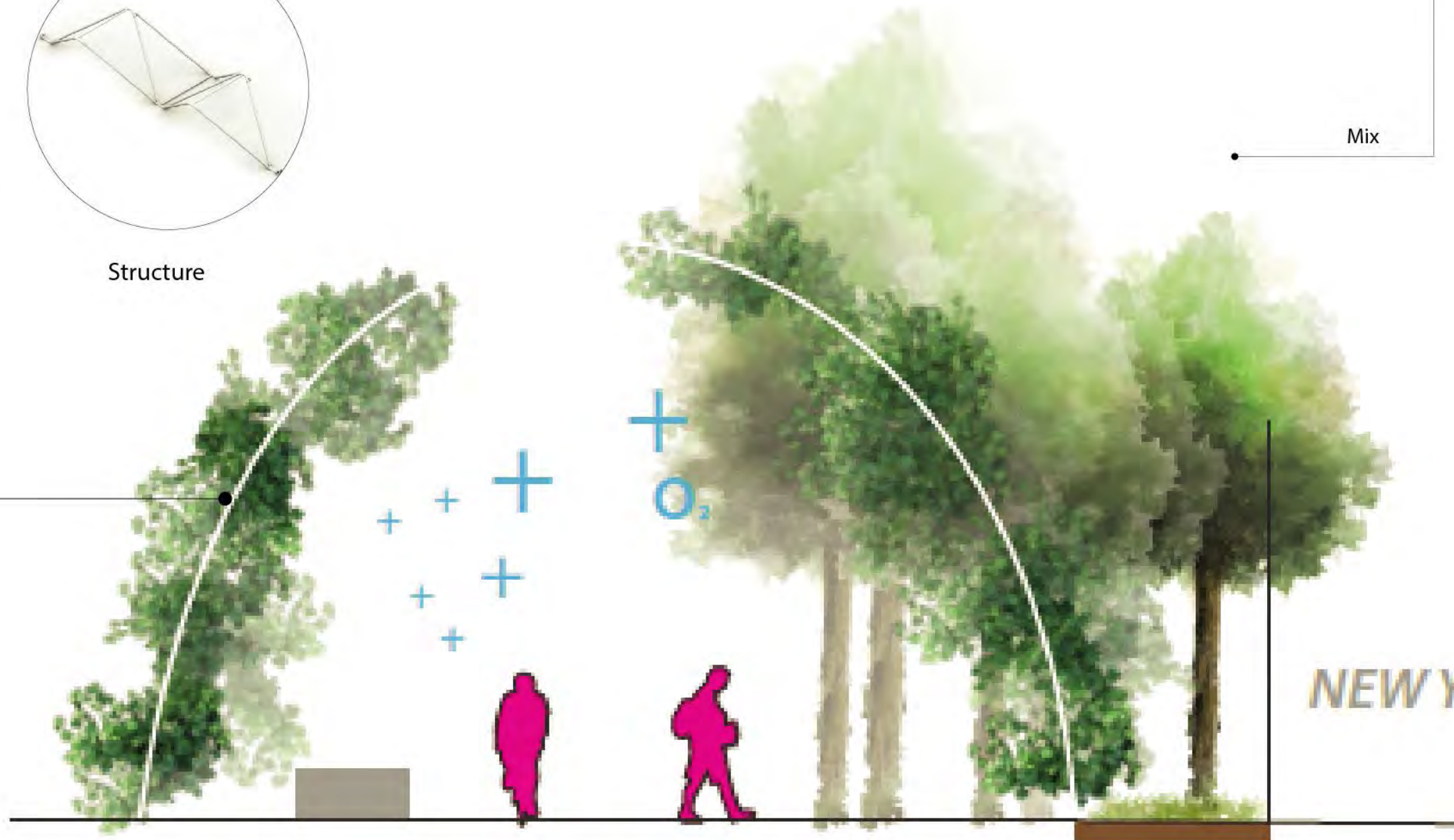
Steel pipe



Structure

Small and dense leaf
& Evergreen
& salt tolerant

Mix



PUBLIC MOVEMENT GATEWAY TO WATERFRONT

